



TAWA TALK

June 2023

Welcome to the latest updates from the Tawa Business Group. In this issue:

Introduction from Tawa Business Group	1
Destination Tawa Project Updates	2
Events and Consultations.....	3
Tawa New Businesses and Business Updates	4
Wellington City Council Strategic Planning Meeting with Tawa BID	5
An Update from Wellington Water on Main Road Watermain Renewals.....	5
Single-Use and Hard-to-Recycle Bans from 1 July 2023	6
Celebrating our Successes: Zelati Gelato and Sorbet	7
Mexted Motors Spring Into Tawa – Saturday 28 October 2023	7
Tawa Community Board Vacancy	8
Personal Profile – CJ Bott, New Zealand Footballer.....	9
Giggle TV	10
Useful Helpline Contact Numbers.....	10

Introduction from Tawa Business Group

It is a privilege to represent and advocate for such an amazing business community. We literally have some of the best food-producing businesses within the Wellington region. Most recently, Zelati Gelato and Sorbet won two awards at Visa Wellington on a Plate (find out more on page 7) and they join a fine collection of eateries all winning prestigious prizes: Nada Bakery for their hot cross buns, Pizza House for best pizza, El Porteño for their infamous cheese scones and although not technically within the BID, English Dhaba in Linden winning best takeaway. These are just the ones I can think of in a few seconds!

I love hearing your success stories so please email me if you have something that you would like me to share.

We have added a varied selection of events to our calendar for the next few months starting with a networking event on Waste Minimisation, then meeting with the general election candidates and finally our AGM. Check out page 3 for further details. If you haven't been to one of our events before, we are a friendly bunch and we look forward to meeting you.

Bernadette, BID Manager

Destination Tawa Project Updates

Hanging Baskets



The winter hanging baskets were changed over recently by the Tawa Rotary team members. A “true community effort, which is co-ordinated by the Tawa Residents’ Association, funded by contributions from the Tawa Community Board, Tawa Business Group and various private donations and potted up by Twiglands”.

The pansy flowers will continue to grow over the winter months, adding colour to the Main Road.

Flags

We recently received a thank you from the RSA for their appreciation of support for the new ANZAC flags. They also wanted to “thank the businesses in Tawa that were very supportive of the Poppy Day Appeal by allowing collection boxes in their businesses during the collection period as well.”



Transport and Infrastructure

The consultation for two P120 parking spaces at 84 Main Road finished on 15 May. The next stage is for it to go to the Traffic Resolutions committee on 22 June. If the councillors agree with the request, then signs could be installed fairly soon after this date.

Destination Tawa

From 20 July, New Zealand (and Australia) will be hosting the 2023 FIFA Women’s World Cup. It is estimated that an additional 25,000 visitors will be coming through Wellington to watch the games and be part of the experience. It is an ideal opportunity to attract some of these visitors to your business, but you need to be careful in how you advertise and promote your products from now through to 20 September.

To find out more about what you can and cannot do, check out: [Marketing during FIFA Women’s World Cup 2023 — business.govt.nz](#)

We will be having football flags along the Main Road and there is an opportunity for your business to have flag bunting. Please let Bernadette know if you would be interested in running a “celebration of women’s football” promotion and if you would like some free bunting.

Job Board

Since starting in August 2022, the job board has advertised nearly 90 vacancies and continues to be a useful service for business owners looking for staff.

This initiative is completely FREE for all BID members and is promoted on social media, our website, in the Residents’ Association newsletter and through Tawa College. You can check it out: [Job Vacancies \(tawabusiness.co.nz\)](#).

If you are looking for staff, please email Bernadette at info@tawabusiness.co.nz to arrange for your vacancies to be included.



Waste Minimisation

We are continuing to work with Wellington City Council on an extensive list of recycling and reuse providers within the Wellington region. Come along and find out more about recycling and reuse options at our next networking event on Tuesday 27 June. See page 3 for more details.

Tawa Business Group Website

The Business Directory has replaced many of the photos with clearer images but there is still some way to go. This is a good opportunity for you to check your entry [Business Directory \(tawabusiness.co.nz\)](#) and to send through any updates and additional photos that you would like included in the gallery to Bernadette at info@tawabusiness.co.nz.

Events and Consultations

JUNE

Safer Plates

Due to a recent increase in vehicle crime in the community, Tawa Community Patrol are running a pop-up Safer Plates event.

**Saturday 10 June 2023,
9am-11am
Carpark at the northern end of the Tawa Community Centre**

For a donation of just \$5 per vehicle, you can have the standard screws on your number plates swapped for anti-theft tamper-resistant screws.

They will accept cash donations on the day (sorry, there is no EFTPOS), or you can make a secure online donation via their Givealittle page in advance through the link below (please consider ticking 'Yes' to the 'Add top-up donation' as this helps cover the fees to use Givealittle, but is completely optional).

<https://givealittle.co.nz/donate/org/tawacp>



Want anti-theft screws on your number plate?

SAFER PLATES
POP-UP

Tawa Community Patrol will be installing tamper-resistant 'Safer Plates' screws for a \$5 donation per vehicle. All proceeds will come to Tawa Community Patrol.

WHEN: Saturday 10 June 2023
TIME: 9.00am-11.00am
WHERE: Tawa Community Centre carpark – north end of the building

Logos for CPNZ, Tawa Community Patrol, and New Zealand Police are included at the bottom.

Tawa Community Board By-Election – Hui for Prospective Candidates

Tawa Community Board by-election Hui for prospective candidates

The Tawa Community Board invites anyone who is interested in knowing more about what the Board does and standing in the by-election to come along for a chat.

**4pm, Sunday 11 June 2023
Boardroom, Tawa Community Centre, 5 Cambridge Street, Tawa**

For more details and to RSVP, email Jill.Day@wcc.govt.nz.

You can find out more about what the Board does and how to stand in the up-coming by-election by attending the hui on Sunday 11 June from 4pm at the Tawa Community Centre. There is also further information on page 8.

Waste Minimisation Networking Event

Following on from our successful survey on waste minimisation, Wellington City Council will be joining us to discuss waste minimisation and how you can save time, money and the environment by reducing and recycling your waste.

- Want to find out more about what options are currently available to reduce and recycle waste?
- Want to find out what is currently happening to our waste and what the future may look like?
- Want to be involved in new initiatives to avoid waste going to landfill?

Join us on:

**Tuesday 27 June
from 5pm to 7pm
at Tawa Community Centre**

There will be an opportunity for networking after the event. Please RSVP to info@tawabusiness.co.nz by Wednesday 21 June to allow for catering.

Low and Co Tawa Charity Night

The team at Low and Co Tawa are celebrating their official grand opening at the Borough on **Thursday 29 June from 6:30 to 9pm**. There will be light refreshments, a raffle, auction and a quiz night to raise money and awareness for the Mary Potter Hospice in Tawa. All welcome, no booking required.

Speed Management Consultation

Wellington City Council is asking for your feedback on Wellington's Draft Speed Management Plan that proposes to reduce speeds on most streets within the Wellington area to safe and appropriate speed levels.

Although the Government is mandating local councils to make some changes by June 2024, WCC wants to hear from you about making much wider changes to speed limits across Wellington city within the next year.

The consultation is open until **5pm on Friday 30 June**. You can have your say here: [Draft Speed Management Plan | Kōrero Mai | Wellington City Council](#)

SEPTEMBER

Meet the Candidates Business Breakfast

With the general election set for 14 October, there will be an opportunity for you to meet the Ōhāriu electorate candidates, hear their views and ask any pressing questions that you may have over a business breakfast on **Thursday 21 September from 7am** at The Borough. Further details will follow shortly but please email Bernadette if you would like to book a place.

OCTOBER

Tawa Business Group AGM

Make a note in your diary as the Tawa Business Group AGM will be held on **Wednesday 11 October from 5:30pm**. Further information will be available closer to the time.

Tawa Rotary Pride In Work Awards

The Tawa Rotary Pride In Work Awards will be held on Tuesday 17 October. These awards are a fantastic opportunity to recognise the outstanding performance of your staff. Further information to follow in our next newsletter.

Mexted Motors Spring into Tawa

With new naming sponsorship rights, Mexted Motors Spring into Tawa will be held on **Saturday 28 October from 10am to 3pm**. See page 7 for further details.

Technology Expo – Businesses wanted to participate

Tawa College are still looking at options to increase student awareness of technology in business. The first option is a Tech Expo, where businesses have a stand and students can wander around and find out about the various technologies used in the workplace. The second option would be a presentation by the business to a group of students, with the opportunity for Q&A.

These sessions would give you the opportunity to discuss the technologies you use to achieve your business outcomes. These inspirational talks are invaluable to help forge the next generation of employees and could be particularly useful if you have an apprenticeship scheme.

If this is something with which you would be interested in being involved, please email Bernadette at info@tawabusiness.co.nz for further information.

Tawa New Businesses and Business Updates

Introducing the following new businesses this month:

The Pet Spa

Benny and the crew operate The Pet Spa from Outlet City. The Pet Spa started in Island Bay in February 2021 and the Tawa branch was opened in October last year. They are available for dog grooming by appointment. To find out more, check out their website: www.thepetspa.co.nz





Twisted Willow

There has been a change of owner at Twisted Willow. At the end of March, Kerri closed the store after running Twisted Willow for five years. A month later, Dax has re-opened the doors and is looking forward to continuing to provide fresh, professionally-arranged flowers. Pop by to see Dax at 188A Main Road or check out their Facebook page: [Twisted Willow Florist | Wellington | Facebook](#)

White Pepper

White Pepper opened at the end of April at 216a Main Road. A family-run restaurant, Disha and Ajay specialise in Indian street food and snacks with their signature dishes being dabeli, vada pav and aloo tikki with chole.

The restaurant is open seven days a week. 5 to 9pm on Monday to Friday and 10am to 9pm on Saturday and Sunday. They are also available for takeaways, catering and venue hire. Check out their menu here: [Menus | Whitepepper](#)



Wellington City Council Strategic Planning Meeting with Tawa BID

At the end of May, the BID manager and members of the Tawa Business Group executive team met with several team leaders at Wellington City Council. The aim of the meeting was to find out more about some of WCC's strategic plans and projects that will roll out over the next few years and how they impact and shape the work that we will be doing.

The key projects that will flow into our strategic business planning process include:

- Engaging with Mataaho Aronui, WCC's Māori business unit, to recognise and celebrate our cultural history;
- Championing and encouraging businesses to be more sustainable through waste minimisation and transition to zero carbon;
- Engaging with WCC on potential bike network connectors to the Main Road.

Work has already started on our Business Strategic Plan for 2023/24 and this will be discussed at our Annual General Meeting on Wednesday 11 October.

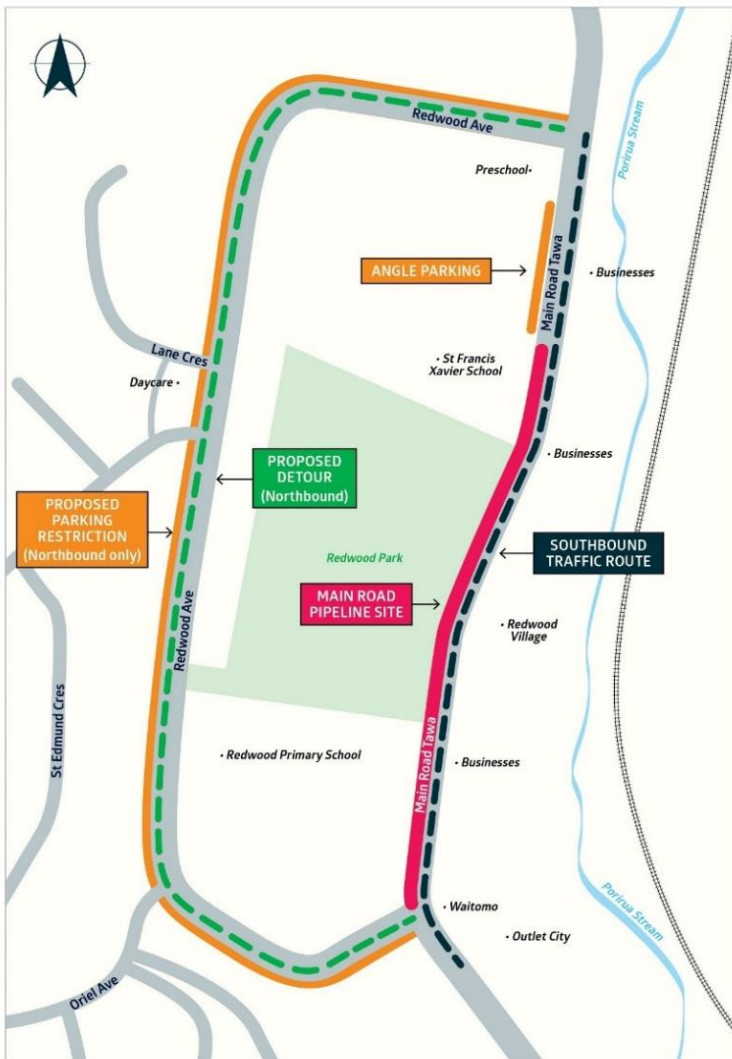


An Update from Wellington Water on Main Road Watermain Renewals

Wellington Water, on behalf of Wellington City Council, has carried out initial investigations for the project to improve the performance and resilience of Tawa's drinking water network.

As detailed in our May newsletter, the Main Road Watermain Renewals project is the first of three in Tawa that Wellington Water is carrying out over the next two years.

It involves renewing an ageing section of asbestos cement watermain between number 68 Main Road and Redwood Avenue. The project will improve the drinking water network's resilience, reducing the risk of emergency repairs and/or outages, providing a more reliable water supply for the area.



The construction part of the project starts in June with laying the replacement watermain and is expected to take around four months to complete.

During this period, as outlined in previous newsletters, the northbound lane of Main Road will need to be closed from 68 Main Road to Redwood Avenue. A detour along Redwood Avenue will be put in place for northbound traffic – as shown in the map (below). Parking will be removed on one side of Redwood Avenue to assist with the flow.

Wellington Water Chief Advisor - Drinking Water, Laurence Edwards they have been working closely with the community to find ways to minimise the impacts as much as possible.

“This includes meeting with St Francis Xavier School and Redwood Primary School to organise and send out details to parents on how to safely drop off and collect your children who attend these schools.

“Again, we know that this project, and the other work we are doing to improve the stormwater network and reduce the risk of flooding in central Tawa, are disruptive.

“We appreciate the community’s ongoing understanding as we carry out this essential work on behalf of Wellington City Council.”

For more information on these projects please visit: [Projects \(wellingtonwater.co.nz\)](https://www.wellingtonwater.co.nz/projects)

Single-Use and Hard-to-Recycle Bans from 1 July 2023

Following on from the ban of some polystyrene takeaway food and drink packaging and some PVC food trays and containers in October 2022, there are further plastics that your business will not be able to supply from 1 July 2023. These are:

- Single-use plastic produce bags
- Single-use plastic drinking straws
- Single-use plastic tableware and cutlery
- Plastic produce labels

To find out more, click here: [Single-use and hard-to-recycle plastic bans | Ministry for the Environment](https://www.mta.govt.nz/single-use-and-hard-to-recycle-plastic-bans)



Celebrating our Successes - Zelati Gelato and Sorbet



Congratulations to Zelati Gelato and Sorbet as they walked away with two special awards from Visa Wellington on a Plate with their Absolutely Avo-licious plant-based dish. They won Most Innovative Dish and were second overall in the Dine Wellington Awards.

Absolutely Avo-licious is a sweet version of avocado on toast, showcasing Filipino flavours. Zelati's housemade real avocado gelato encased in a 72% dark chocolate "avocado skin" had a peanut butter sorbet "avocado pip" nestled in the centre, which sat on top of a gluten-free waffle cone and toasted rice.

The team at Zelati said, "This is a testament to our awesome small-but-mighty Zelati team who helped us bring this amazing idea to life and to offer such a unique dish! So happy to be together with family and celebrate."

Visa Wellington On a Plate is the largest culinary festival in the southern hemisphere, and from 2023 will be held in both May and August. Festival goers can explore a curated programme of festival events, pop-ups, chef collaborations, dishes, cocktails and burgers. Currently in its 15th year, Visa Wellington On a Plate is firmly established as a key event in the festival calendar for people across the Wellington region, and New Zealand.

The August edition of Visa Wellington On a Plate runs from 11 - 27 August 2023 and will feature Beervana and Burger Wellington presented by Garage Project, as well as beer and burger events and Pop Ups.

[Visa Wellington On a Plate \(visawoap.com\)](https://visawoap.com)

Mexted Motors Spring Into Tawa – Saturday 28 October 2023

Message from the Mexted Motors Spring into Tawa team:

"We're thrilled to have welcomed Mexted Motors as naming rights sponsor for Spring into Tawa for a three-year term. This is a great partnership for Spring into Tawa. As Tawa's biggest annual event, Spring into Tawa is an important part of our community – providing an opportunity for people to gather and connect, promote their organisation and services, sell their goods – and have a great day out.

"As you can imagine, as the event grows, so too do the costs. Spring into Tawa is a not-for-profit event, relying on grants and sponsorship to cover the costs of the event. These costs are increasing as the general cost of living increases.

"We've added significant elements to the event in the past few years which are now fundamental to our event – such as free activities and entertainment for children and young people, entertainment across three stages and a focus on reducing the impact the event has on the environment and reducing our waste.

"All these things cost money – and entering into sponsorship arrangements helps to ensure we can continue to do these things – and in the future, we can grow the event.

"We're really excited and humbled by this partnership with Mexted Motors – thanks to Mark, Nicole and team for their support. Our event will now be called Mexted Motors Spring into Tawa.

Stallholder Applications open 1 June

"From 1 June, we have opened applications for stallholders for this year's event. In recent years, the event has been very popular, and we have had to operate a waiting list for people wanting a stall.

“As with previous years, all stalls will be located on the Main Road, with only stalls run by Main Road and Plaza businesses allowed on the footpath or in the plaza. We would love to see lots of businesses in Tawa having stalls outside their stores, or part of the stalls on the Main Road, promoting their goods and services. If you would like a stall on the Main Road, you will need to apply using the application form on our website (live from 10am 1 June) and pay the stallholder fee.

“If you choose to have a stall on the footpath or plaza outside your business, we ask that you still complete the stallholder form so we're aware of your stall. We also ask that you consider paying the stallholder fee as a contribution towards the costs of the event - which includes Wellington-wide advertising that draws a lot of people from outside of Tawa to our suburb for the event.

Sponsorship opportunities still available

“We still have sponsorship opportunities available for between \$100 and \$1,000 investment, or of products/services. Please get in touch with us on info@springintotawa.nz if you're interested in becoming a sponsor. In return for supporting and being part of this great community and regional event, you will receive mentions on our social media where our reach is growing by the day, opportunities for event wide signage and shout-outs from the stage.

Road closure

“The proposal to close the Main Road from 5am - 5pm between Surrey Street and Lyndhurst Street will be considered by the Tawa Community Board on Monday 26 June. You can read more about the proposed closure on our website here: <https://springintotawa.nz/road-closure/>.”

If you have any questions about Mexted Motors Spring into Tawa and how you can be involved, please contact them on info@springintotawa.nz



Tawa Community Board Vacancy

Following the resignation of Janryll Fernandez from the Tawa Community Board, a vacancy has become available and candidate nominations for the by-election opened on Thursday 25 May. Community Board members represent and act as spokespeople for the interests of their local community, so this is a significant role, says Board Chair Jill Day.

“While we are sad to see Janryll go, we are grateful for the passion and commitment he has brought to the role, and we wish him well with his new adventures overseas. His departure leaves a big hole on the board, but we are excited at the prospect of a new candidate bringing their fresh take on how we can best serve our community.

Tawa Community Board by-election

Hui for prospective candidates

The Tawa Community Board invites anyone who is interested in knowing more about what the Board does and standing in the by-election to come along for a chat.

4pm, Sunday 11 June 2023

Boardroom, Tawa Community Centre, 5 Cambridge Street, Tawa

For more details and to RSVP, email Jill.Day@wcc.govt.nz.

“The community is the beating heart of Tawa, and the board advocates for them – especially where the big issues like housing, infrastructure and transport are concerned. So if you are passionate about the community and want to support it, we encourage you to find out more about the role and throw your hat in the ring.”

Candidates must be nominated by two Tawa residents, but don't need to live in Tawa themselves. Nomination forms are available from the Wellington City Council offices at Level 16, 113 The Terrace or downloadable from [Tawa Community Board 2023 by-election – Nomination form \(wellington.govt.nz\)](#).

Completed nomination documents must be received by the Electoral Officer no later than noon Thursday 22 June 2023. Each nomination must be accompanied by a deposit of \$200 incl GST, payable by online banking (details available on the nomination form) or cash.

The nomination form, profile statement and photo can also be emailed to wellingtoncc@electionz.com.

For more information, potential candidates can email election@wcc.govt.nz or attend the hui for prospective candidates on Sunday 11 June from 4pm at the Tawa Community Centre. If there is more than one candidate, voting will take place 27 July – 18 August.

Personal Profile – CJ Bott, New Zealand Footballer

While investigating ways in which the Tawa business community could benefit from the potential 25,000 extra visitors coming through Wellington for the FIFA Women's World Cup 2023™ in July and August this year, we discovered that one of the New Zealand team members started her footballing career in Tawa. With a little investigative work, we were able to track her down in the hope of organising a meet and greet to discuss her footballing career.

In the meantime, CJ has been kind enough to share a little about the grit, determination and fearlessness that has got her to where she is today. Valuable traits that any successful businessperson will know all about!

“As a young Tawa girl, my mum encouraged my two brothers and I to play sport which soon turned into playing as much sport as humanly possible. Through community and school sport, I've tried my hand at multiple codes but football stole my heart, so from the age of 13 I dedicated myself fully to it.

“I loved playing for Tawa in my younger years and truly believe that playing amongst the Tawa boys has shaped who I am as a player today. Those boys never held back against me, and from the get-go I was determined to never be beaten by a boy. My competitive nature, grit and fearlessness on the pitch is a result of my time at Tawa AFC.

“In my senior career I have been lucky enough to play my professional game in Germany, Sweden, Norway and now England. I'm currently signed for Leicester City in the top league in England as well as still representing the NZ Football Ferns 9 years on. Playing for the Ferns is something I will forever hold close to my heart and although we are often the underdogs in international football, every time I put the fern on my chest, I am putting it on to win.

“With the FIFA Women's World Cup on our doorstep, it is a massive opportunity to expose New Zealand to a game that has come on leaps and bounds in the last few years, and I can't wait to show kiwi girls where this sport can take them. The opportunities in women's football are endless these days and although there is a lot of work to be done in New Zealand, moments like this World Cup can and will change the trajectory of the game for the better and I can't wait to see that take shape.

“I hope Kiwis and our Tawa locals can get behind the team when we play in Wellington and see this for themselves. Get your tickets and I can't wait to see you all there!”

You can buy tickets here: [Ticketing \(fifa.com\)](https://www.fifa.com/ticketing)



Giggle TV

Not a Tawa-based company, but a business that is looking to expand its screens in the Tawa area and increase business marketing.

Starting in 2008, with 30 screens dotted around Manawatū, Giggle now boasts over 1,200 host locations across New Zealand, with over 1.6 million people passing their screens every week. Giggle believe there is too much bad news in the world. To remedy this, they have created New Zealand's largest Digital Out Of Home (DOOH) entertainment network and make people laugh using short, G-rated, humorous, sticky content that keeps the viewer engaged.



Screens are installed in waiting areas such as food outlets, gyms, service stations and so on, entertaining otherwise impatient customers. Interspersed with the sticky content are commercial messages, and their format engages the viewer—making them more receptive to business marketing.

There are currently just over half a dozen screens in businesses in Tawa and they would like to double this. It's free to have a screen.

Seen as cost-effective marketing, costs to advertise on Giggle can be between \$0.21 and \$1.25 per screen per day (variable according to your campaign terms). Customers spend an average of 2 minutes and 38 seconds watching the Giggle screens and the content to advertising ratio is 65:35, with both content and advertising being around 10 to 15 seconds in length.

For more information in either having a screen or as a marketing opportunity, check out their website: [Giggle – We have created a medium for local businesses to deliver brand messages in an affordable and engaging way \(gogiggle.nz\)](https://www.gogiggle.nz)

Useful Helpline Contact Numbers

As a result of a number of enquiries to NZ Police, our Community Liaison Officer, Constable Sarah Steed has collated a list of service organisations in NZ who are there to support people through challenging times:

If it's an emergency

Call 111 immediately in an emergency. (Police non-emergency number – 105)

Healthline

If you have COVID-19 symptoms, call the dedicated COVID-19 Healthline:

- for free on 0800 358 5453
- on +64 9 358 5453 if you have an international SIM.

For any other health concerns, call the general Healthline number on 0800 611 116.

Mental wellbeing & abuse helplines

These are some of the helplines available that offer support, information and help.

- 1737, need to talk? - For support with anxiety, distress or mental wellbeing, call or text 1737 to talk with a trained counsellor for free, 24 hours a day, 7 days a week.
- Youthline— call 0800 376 633, free text 234 or email talk@youthline.co.nz
- Kidsline—call 0800 54 37 54 (0800 KIDSLINE) for young people up to 18 years of age.
- Skylight —call 0800 299 100 helping children, young people and their families and whānau through tough times of change, loss, trauma and grief
- Lifeline —0800 543 354 (0800 LIFELINE) or free text 4357 (HELP)
- Suicide Crisis Helpline —0508 828 865 (0508 TAUTOKO)
- Depression and Anxiety Helpline —0800 111 757 or free text 4202 to talk to a trained counsellor about how you are feeling or to ask any questions.
- Anxiety phone line —0800 269 4389 (0800 ANXIETY)

- Family Services 211 Helpline 0800 211 211— for help finding, and direct transfer to, community-based health and social support services in your area
- OUTline NZ— call 0800 688 5463 for confidential telephone support for sexuality or gender identity issues
- Women’s Refuge by calling 0800 743 843 (0800 REFUGE) to be linked up with an advocate in your area
- Elder Abuse Helpline — call 0800 32 668 65 (0800 EA NOT OK). 24-hour service answered by registered nurses who can connect to local elder abuse specialist providers
- Hey Bro helpline— call 0800 HeyBro (0800 439 276). 24/7 help for men who feel they’re going to harm a loved one or whānau member
- Oranga Tamariki —call 0508 325 459 (0508 FAMILY) or email contact@ot.govt.nz for concerns about children and young people

Deaf, hearing impaired, Deafblind or speech impaired

If you are deaf, hearing impaired, Deafblind or speech impaired you can use the New Zealand Relay Service to call.